



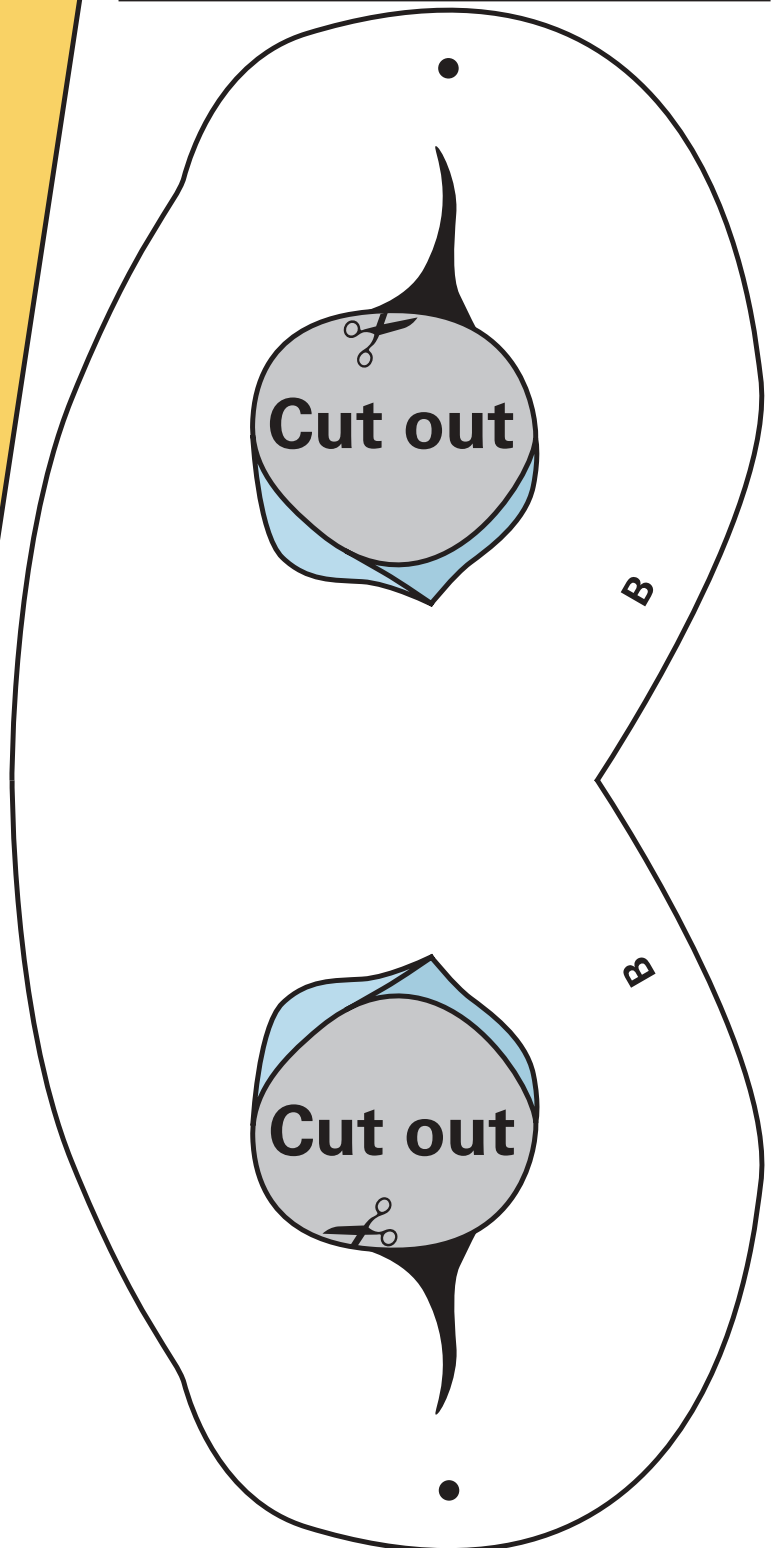
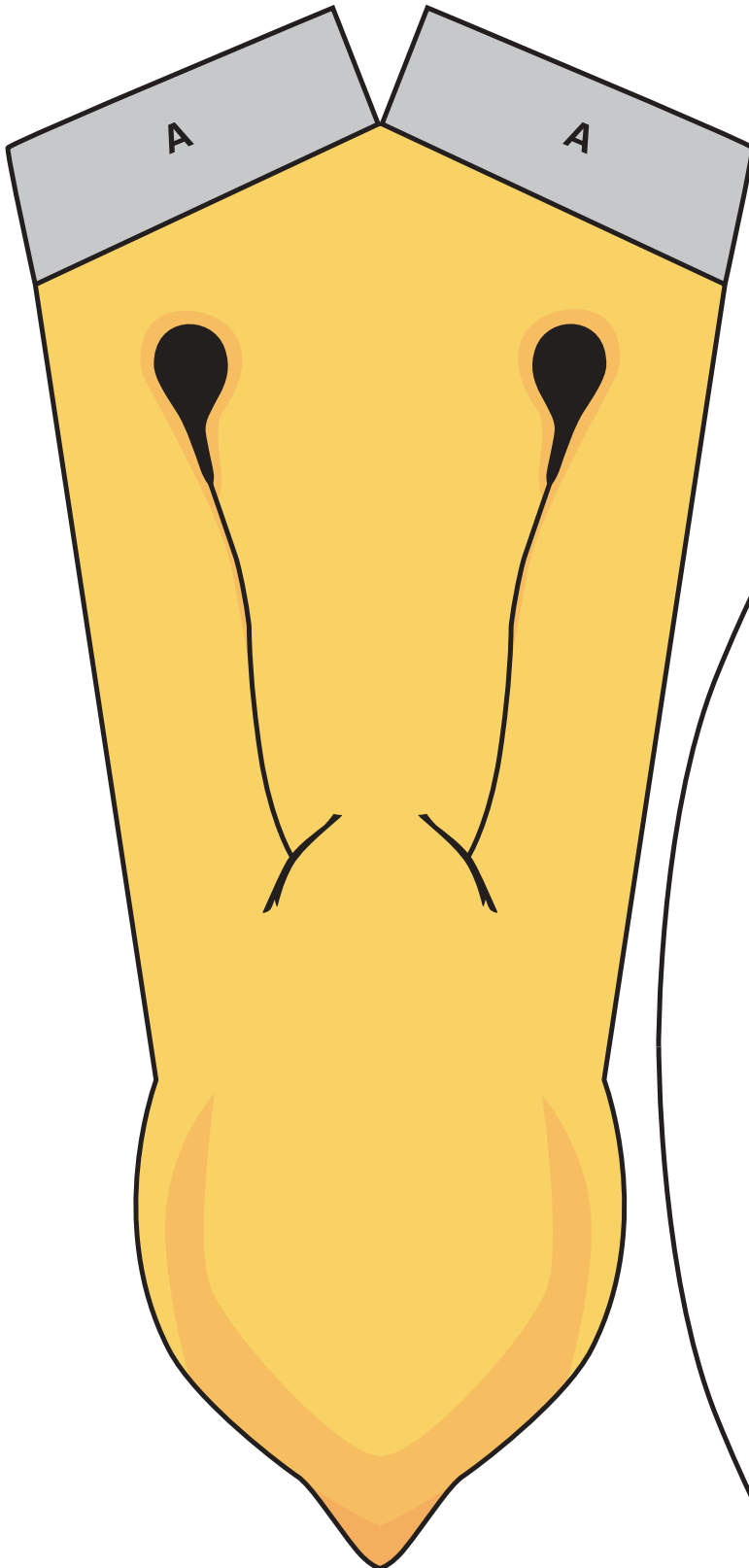
# Albatross mask

## You will need:

Scissors  
Glue  
Elastic

## What to do:

- Cut out the outlines of the face and the beak.
- Cut out the holes for the eyes (you might need to ask an adult to get you started).
- Make a small hole where the two dots are to the side of each eye. Attach the elastic so it will fit around your head.
- Fold the two flaps marked 'A' down behind the beak.
- Stick flaps 'A' to where it is marked 'B', following the edge of the mask.



**RSPB Wildlife Explorers**  
is the junior membership  
of the Royal Society for  
the Protection of Birds



[www.rspb.org.uk/youth](http://www.rspb.org.uk/youth)

RSPB Wildlife Explorers is the junior membership of the Royal Society for the Protection of Birds.

331-1234-05-06  
Registered charity no 207076

### **Amazing albatrosses**

The wandering albatross has the largest wingspan on earth – up to 3.6 metres. That's more than one metre higher than the goalposts on a football pitch!